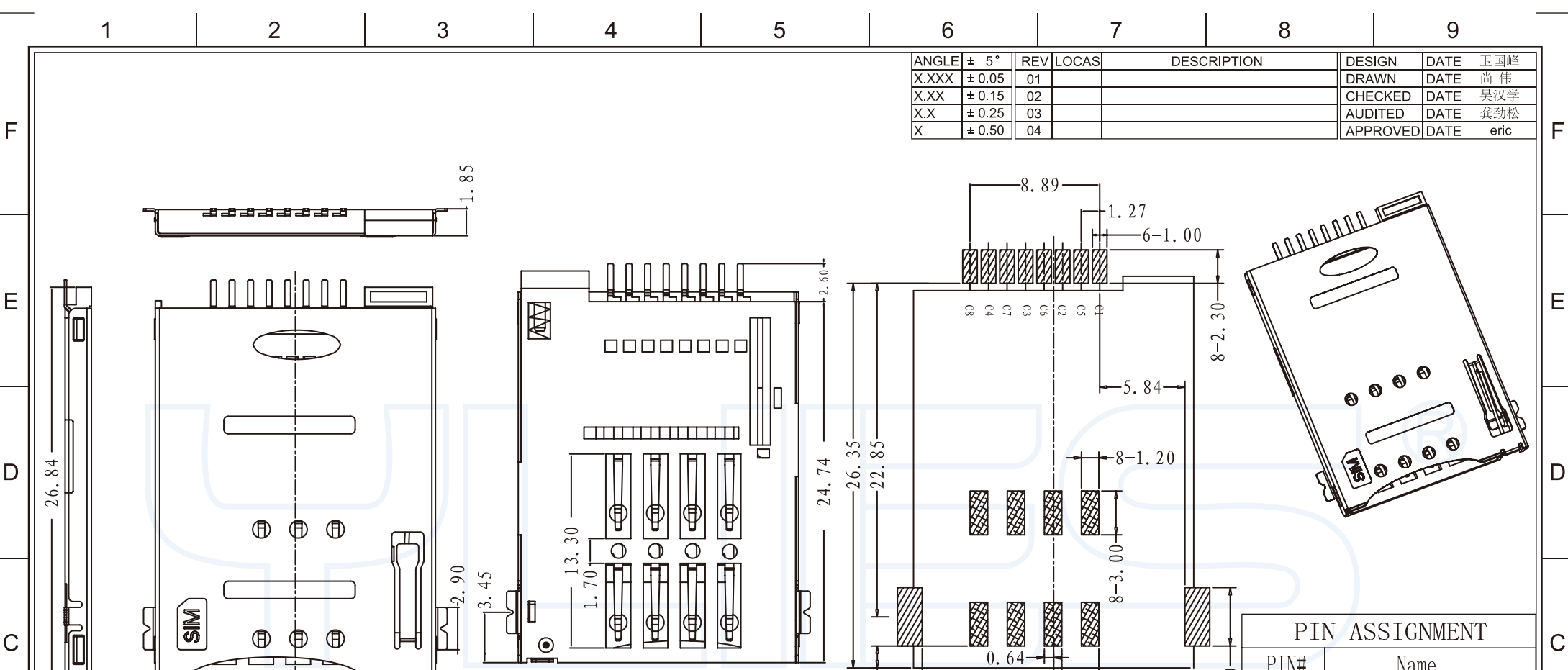


|       |        |     |       |             |          |      |      |
|-------|--------|-----|-------|-------------|----------|------|------|
| ANGLE | ± 5°   | REV | LOCAS | DESCRIPTION | DESIGN   | DATE | 卫国峰  |
| X.XXX | ± 0.05 | 01  |       |             | DRAWN    | DATE | 尚伟   |
| X.XX  | ± 0.15 | 02  |       |             | CHECKED  | DATE | 吴汉学  |
| X.X   | ± 0.25 | 03  |       |             | AUDITED  | DATE | 龚劲松  |
| X     | ± 0.50 | 04  |       |             | APPROVED | DATE | eric |



| PIN ASSIGNMENT |          |
|----------------|----------|
| PIN#           | Name     |
| C1             | VCC      |
| C2             | RST      |
| C3             | CLK      |
| C4             | Reserved |
| C5             | GND      |
| C6             | VPP      |
| C7             | I/O      |
| C8             | Reserved |

**Specifications/  
备注 (Remark)**

1-材料 (MATERIAL)  
 胶芯: LCP UL94V-0 Housing:LCP UL94V-0  
 端子: 黄铜 Contact: Copper Alloy

2-特性 (characteristics):  
 额定电流: 0.5 AMP. Raring Current:0.5 AMP.  
 接触阻抗: ≤100mΩ MAX. Contact Resistance:≤100mΩ MAX.  
 绝缘阻抗: ≥500MΩMIN. Insulating Resistance:≥500MΩMIN.  
 耐电压: 250V AC/MINUTE Withstanding Voltage:250V AC/MINUTE  
 温度范围: -25度至+90度 Temperature Range: -25°Cto +90°C

**RECOMMENDED P.C.B LAYOUT**  
 TOLERANCE:±0.05

NOTE: WIRING PATTERN  
 PROHIBITED AREA

|   |           |                   |      |       |      |            |                  |             |  |
|---|-----------|-------------------|------|-------|------|------------|------------------|-------------|--|
| 东莞市瑞翔精密连接器有限公司<br>DONG GUAN YLIES PRECISE CONNECTOR CO.,LTD<br>Tel:0769-85381995 / Fax:0769-85493987 / Email: ylies@ylies.cn / Web:www.ylies.cn | TITLE     | 521-SIM卡座自弹式 PUSH |      |       | DATE | 2018-02-18 |                  |             |  |
|   | PROJECTON | REV               | UNIT | SCALE | PAGE | PART NO:   | ESIM060825419504 | DRAWING NO: |  |
|   | A         | mm                | 1:1  | 1/1   |      |            |                  |             |  |