

ANGLE	± 5°	REV	LOCAS	DESCRIPTION	DESIGN	DATE	卫国峰
X.XXX	± 0.05	01			DRAWN	DATE	尚伟
X.XX	± 0.15	02			CHECKED	DATE	吴汉学
X.X	± 0.25	03			AUDITED	DATE	龚劲松
X	± 0.50	04			APPROVED	DATE	eric

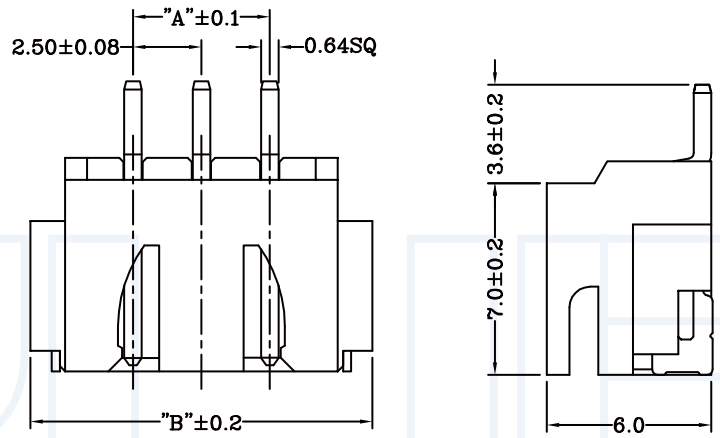
Specifications/备注 (Remark)

1-材料 (MATERIAL)

胶芯: PA9T UL94V-0
Housing: PA9T UL94V-0
端子: 黄铜
Contact: Brass

2-特性 (characteristics):

额定电压: 250V AC/DC .
Voltage Rating: 250V AC/DC .
额定电流: 3 AMP (AWG #22-28) .
Raring Current: 3 AMP (AWG #22-28) .
接触阻抗: ≤10mΩ MAX.
Contact Resistance: ≤10mΩ MAX.
绝缘阻抗: ≥1000MΩMIN.
Insulating Resistance: ≥1000MΩMIN.
耐电压: 1000V AC/MINUTE
Withstanding Voltage: 1000V AC/MINUTE
温度范围: -25度至+85度
Temperture Range: -25°Cto +85°C

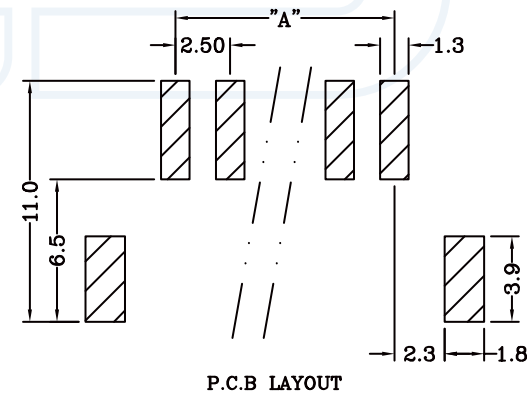
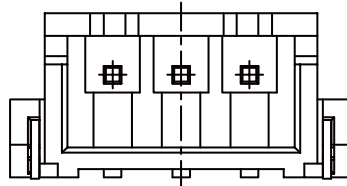
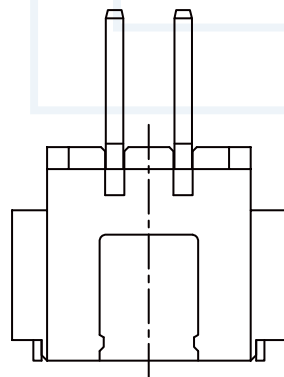


Poles	Part No	Dimensions (mm)		Q'ty/reel
		A	B	
2	8824-02	2.5	10.0	500
3	8824-03	5.0	12.5	500
4	8824-04	7.5	15.0	500
5	8824-05	10.0	17.5	500
6	8824-06	12.5	20.0	500
7	8824-07	15.0	22.5	500
8	8824-08	17.5	25.0	500
9	8824-09	20.0	27.5	500
10	8824-10	22.5	30.0	500
11	8824-11	25.0	32.5	500
12	8824-12	27.5	35.0	500
13	8824-13	30.0	37.5	500
14	8824-14	32.5	40.0	500
15	8824-15	35.0	42.5	500
16	8824-16	37.5	45.0	500

ORDERING INFORMATION

W254-XX XX X XX X

NO.OF PINS Per Row 02-16P	INSULATOR MATERIAL A:PA46 B:PA66 C:PA9T D:LCP	PACKING A:PE Bag B:TUBE C:TRAY
SERLES NO 254:2.54mm	CONTACT PLATING FULL OF GOLD SEMI-GOLD	CONTACT SHAPE S: Straight R: Right Angle LT: STRAIGHT SMT WT: RIGHT ANGLE SME
A0=0.8u" B0=0.8U"	A9=30u" B9=30U"	S1=ORDINARY TIN PLATED S2=MATTE TIN PLATED S3=TIN-PLATED HIGH-TEMPERATURE



YLIES 东莞市瑞翔精密连接器有限公司
DONG GUAN YLIES PRECISE CONNECTOR CO.,LTD

Tel:0769-85381995 / Fax:0769-85493987 / Email: ylies@ylies.cn / Web:www.ylies.cn

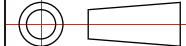
TITLE

383-2.54mm 卧贴 单排插针(XH)

DATE

2018-02-18

PROJECTON



REV

A

UNIT

mm

SCALE

1:1

PAGE

1/1

PART NO:

W254-XXS1CWTB

DRAWING NO:

1

2

3

4

5

6

7

8

9