

ANGLE	± 5°	REV	LOCAS	DESCRIPTION	DESIGN	DATE	卫国峰
X.XXX	± 0.05	01			DRAWN	DATE	尚伟
X.XX	± 0.15	02			CHECKED	DATE	吴汉学
X.X	± 0.25	03			AUDITED	DATE	龚劲松
X	± 0.50	04			APPROVED	DATE	eric

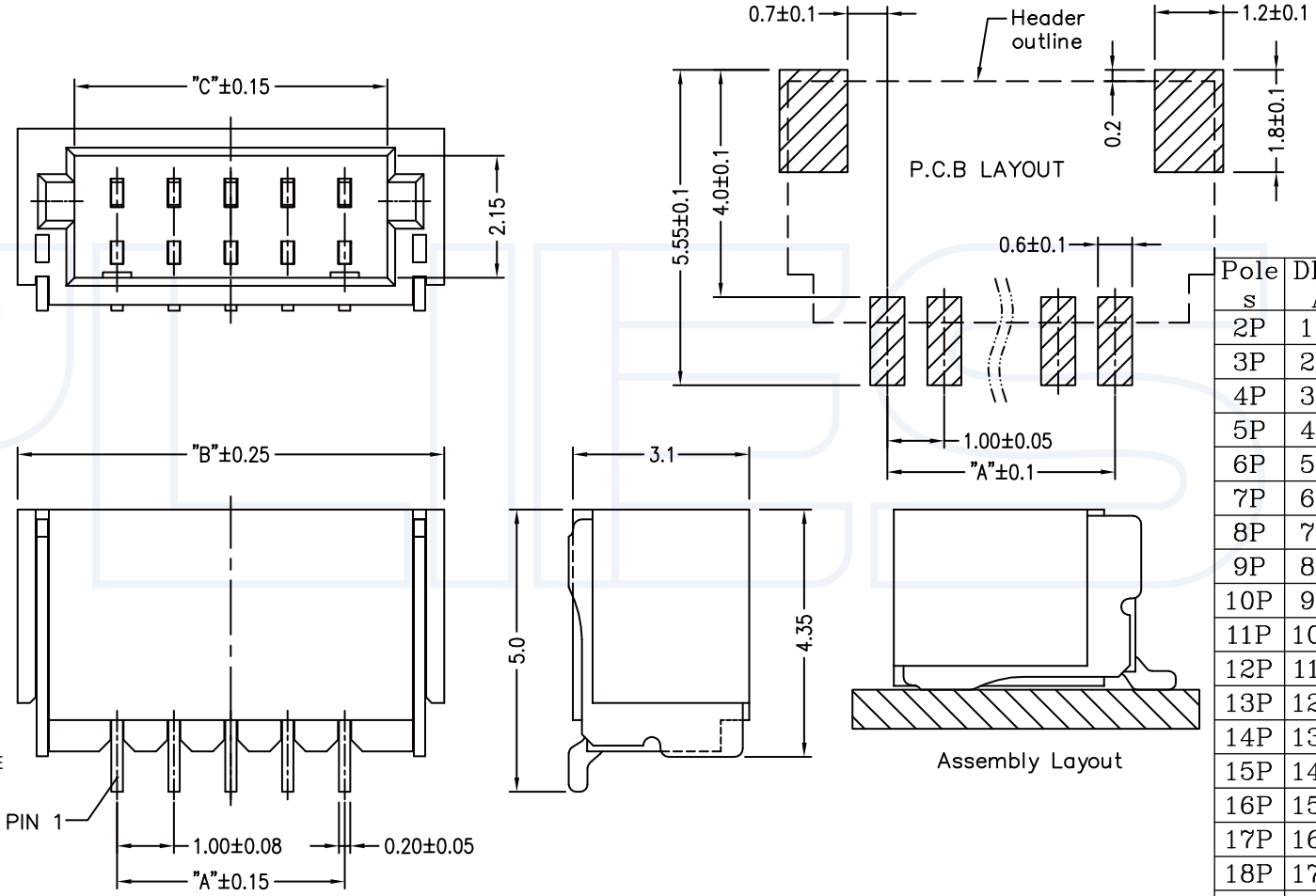
### Specifications/备注 (Remark)

- 1-材料 (MATERIAL)  
 胶芯: PA9T UL94V-0  
 Housing: PA9T UL94V-0  
 端子(焊片): 磷青铜  
 Contact (Solder Tab): Phosphor bronze
- 2-特性 (characteristics):  
 额定电压: 50V AC/DC .  
 Voltage Rating: 50V AC/DC .  
 额定电流: 1 AMP (AWG #28) .  
 Raring Current: 1 AMP (AWG #28) .  
 接触阻抗: ≤20mΩ MAX.  
 Contact Resistance: ≤20mΩ MAX.  
 绝缘阻抗: ≥100MΩMIN.  
 Insulating Resistance: ≥100MΩMIN.  
 耐电压: 500V AC/MINUTE  
 Withstanding Voltage: 500V AC/MINUTE  
 温度范围: -25度至+85度  
 Temperature Range: -25°Cto +85°C

### ORDERING INFORMATION

#### W10-XX XX X XX X

- |   |  |  |
|---|--|--|
| NO.OF PINS<br>Per Row<br>02-20P   | INSULATOR<br>MATERIAL<br>A:PA46<br>B:PA66<br>C:PA9T<br>D:LCP | PACKING<br>A:PE Bag<br>B:TUBE<br>C:TRAY                |
| SERLES NO<br>10:1.0mm   | CONTACT PLATING<br>FULL OF GOLD SEMI-GOLD                    | CONTACT SHAPE<br>LT:STRAIGHT SMT<br>WT:RIGHT ANGLE SME |
| A0=0.8u"<br>.....<br>A9=30u"<br>S1=ORDINARY TIN PLATED<br>S2=MATTE TIN PLATED<br>S3=TIN-PLATED HIGH-TEMPERATURE | B0=0.8U"<br>.....<br>B9=30U"                                 |  |



Pole s	DIM. A	DIM. B	DIM. C
2P	1.0	4.5	2.6
3P	2.0	5.5	3.6
4P	3.0	6.5	4.6
5P	4.0	7.5	5.6
6P	5.0	8.5	6.6
7P	6.0	9.5	7.6
8P	7.0	10.5	8.6
9P	8.0	11.5	9.6
10P	9.0	12.5	10.6
11P	10.0	13.5	11.6
12P	11.0	14.5	12.6
13P	12.0	15.5	13.6
14P	13.0	16.5	14.6
15P	14.0	17.5	15.6
16P	15.0	18.5	16.6
17P	16.0	19.5	17.6
18P	17.0	20.5	18.6
19P	18.0	21.5	19.6
20P	19.0	22.5	20.6

**YLIES** 东莞市瑞翔精密连接器有限公司  
 DONG GUAN YLIES PRECISE CONNECTOR CO.,LTD

Tel:0769-85381995 / Fax:0769-85493987 / Email: ylies@ylies.cn / Web:www.ylies.cn

TITLE 332-1.0mm 卧贴插针(SH) DATE 2018-02-18

PROJECTON REV A UNIT mm SCALE 1:1 PAGE 1/1

PART NO: W10-XXXXDWTB DRAWING NO: