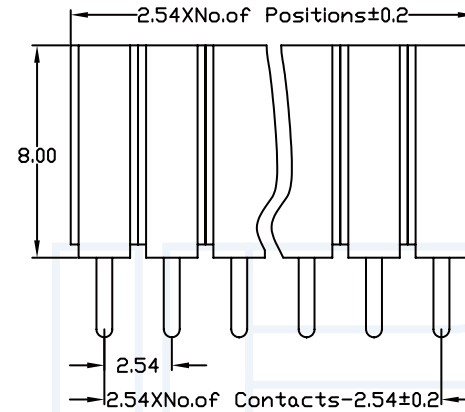
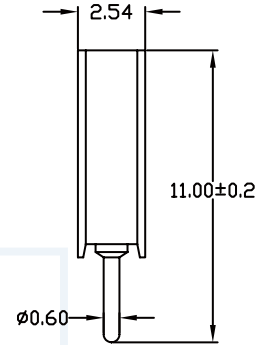


ANGLE	± 5°	REV	LOCAS	DESCRIPTION	DESIGN	DATE	卫国峰
X.XXX	± 0.05	01			DRAWN	DATE	尚伟
X.XX	± 0.15	02			CHECKED	DATE	吴汉学
X.X	± 0.25	03			AUDITED	DATE	龚劲松
X	± 0.50	04			APPROVED	DATE	eric

Specifications/备注 (Remark)

Insulator:Black glass filled polyester
 PPS-GF30-FR
 Flammability:UL94V-0
 Sleeve:Brass CuZn 36Pb3(36000)
 Contact clip(4 finger):Beryllium copper(C17200)
 Mating pin:Ø0.70 to 0.90mm or 0.635mmSQ
 Forces:(polished steel gauge Ø0.76mm)
 Insertion:1.2 N typ
 Withdrawal:0.6 N typ
 Mechancial life:min 500 cycles
 Rated current:3.0Amp
 Contact resistance:Max 10mΩ
 Dielectric resistance:Min 1000V RMS



Stright socket connector height
 8.0mm:solder tail,single row
 Availability from:1to 40 contacts
 Standard number of contacts 5, 6,
 8, 9, 10, 11, 12, 14, 16, 17, 20, 25, 30,
 32 and 40

ORDERING INFORMATION R26XX-X XX X X G S 1101

HEIGHT OF HOUSING:
 70:7.0mm
 80:8.0mm

NO.OF ARRAY PITCH
 0:NO PITCH
 3:2.54mm

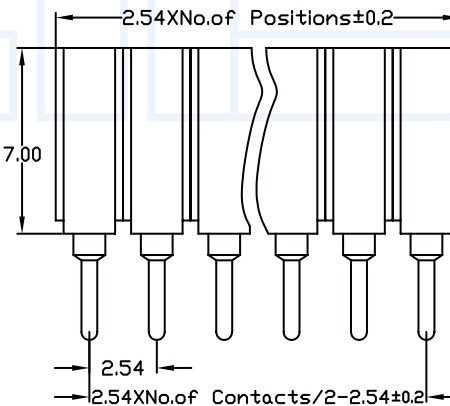
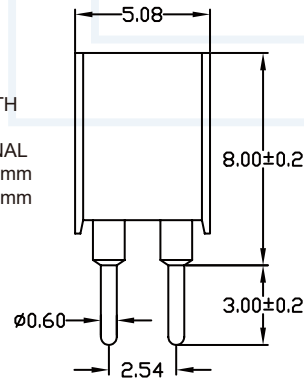
LENGTH OF TERMINAL
 074:7.40mm
 100:10.0mm

NO.OF ROW:
 1:SINGLE ROW
 2:DUAL ROW

NO.OF PINS PER ROW:
 01-40P

CONTACT PLATING
 A=1U"
 B=2U"

 E=15U"
 F=30U"
 S=ORDINARY TIN PLATED
 H=HALF GOLD PLATED TIN



Stright socket connector height
 8.0mm:solder tail,double row
 Availability from:2 to 80 contacts
 Standard number of contacts 16, 18,
 26, 40, 72 and 80

YLIES 东莞市瑞翔精密连接器有限公司
 DONG GUAN YLIES PRECISE CONNECTOR CO.,LTD

Tel:0769-85381995 / Fax:0769-85493987 / Email: ylies@ylies.cn / Web:www.ylies.cn

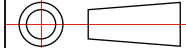
TITLE

278-2.54mm 圆孔排母 180度

DATE

2018-02-18

PROJECTON



REV

A

UNIT

mm

SCALE

1:1

PAGE

1/1

PART NO:

R26XX-XXXXXGS1101

DRAWING NO: